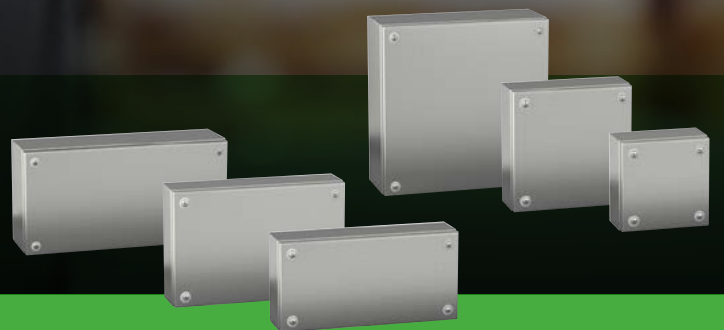




Spacial SBX

Universal Enclosures
Catalog 2020
Stainless-Steel Industrial Boxes



se.com/enclosures

Life Is On

Schneider
Electric

Spacial SBX Stainless-Steel Industrial Boxes Introduction

> Simplicity, ergonomics and quality.

PB503875-66



PB503876



Selection

- 6 sizes
- 80 mm and 120 mm in depth.

PB503883



Sturdy with Good Ingress Protection

- Thickness of 1.2 mm
- Mechanical protection rating up to IK10.
- Ingress protection rating up to IP66.

PB503874-32



Added Value to your Work

- Quality and esthetics.
- Same dimensions as Steel boxes (SBM range).
- Mounting with versatile external brackets.
- Certification*: UL, Veritas and BVM.

PB503873



Ergonomics

- Cover opening and accessory mounting with **just a screwdriver.**

* Certifications pending

> Personalized cut-outs.

PB50672-50



Save Time

- Enclosure delivered with cut-outs, so you can focus on your added-value work



Get a High Quality Cut-Out

- Cut-outs made with an industrial laser machine for a perfect result, burr-free, with high accuracy machining tolerances



Get the Best Esthetic

- Scotch-Brite® brushed.
- External surfaces with no scratches

Stainless-Steel Industrial Boxes Characteristics

P1500664-45



Characteristics	Spacial SBX Flat box
	<p>Box with plain faces Single-piece body (rectangular structure). Front design incorporating folded gutters. Flat rear. 2 drilled profiles for installing mounting plates and DIN Rails, with mounting centers of 12.5 mm. Equipped with 4 half-turn thread screws to help ensure maximum watertightness. Polyurethane sealing gasket.</p> <p>Protection of personnel Earthing connection mandatory for all boxes: Spacial SBX Stainless-Steel boxes are equipped with an M6 x 10 earthing stud welded in the cover, to be linked with the body for equipotential connection. Earthing braid to be ordered separately (Ø 6.4 mm terminal).</p>
Material	AISI 304L Stainless-Steel, thickness of 1.2 mm.
Finish	Scotch-Brite® brushed.
Ingress protection rating	IP66
Mechanical protection rating	IK10
Standard compliance with enclosure standard	IEC 62208 and the RoHS directive.
Certifications*	<ul style="list-style-type: none"> ■ UL, BV, BVM ■ Nema Type 4, 4X, 13 according to UL 508A standard ■ Fire class: M0
Installation	<p>Indoor installation Direct wall-mounting (4 x Ø 10 mm holes with sealing plugs to maintain the IP rating) or with the help of fixing lugs installed from the outside (to be ordered separately, see the specific accessory pages). Distance between mounting holes enables the installation of the box in the same locations as many existing enclosures.</p> <p>Outdoor installation Compliant with IEC 62208 regarding type tests specified in §9.12 (resistance to ultra-violet (UV) radiation) and §9.13 (resistance to corrosion). It is always advisable to place the box under shelter to avoid water stagnation on the upper part of the enclosure.</p>
Maximum load capacity	On the body: 50 kg/m ²
Other characteristics	<p>Vibration constraints Specific construction of the Spacial SBX - Single-piece body (rectangular structure). The rear is flat without added parts - this helps ensure compliance with certain vibration constraints. The tests were conducted according to the marine application by Bureau Veritas Marine*.</p>

* Certifications pending

Spacial SBX

Stainless-Steel Industrial Boxes Selection Guide



Dimensions			Box	Mounting plate	DIN rail	Fixing lugs	Sealing kit
Height (mm)	Width (mm)	Depth (mm)	SBX				
150	150	80	NSYSBX15158	NSYMM11SB	NSYAMRD15357SB	NSYAEFPFSBX*	NSYPPSB*
	300	80	NSYSBX15308	NSYMM13SB	NSYAMRD30357SB		
200	200	80	NSYSBX20208	NSYMM22SB	NSYAMRD20357SB		
	300	80	NSYSBX20308	NSYMM23SB	NSYAMRD30357SB		
	400	120	NSYSBX204012	NSYMM24SB	NSYAMRD40357SB		
300	300	120	NSYSBX303012	NSYMM33SB	NSYAMRD30357SB		
Supply			1	1	10	4	1

* Same reference for all dimensions.

Stainless-Steel Industrial Boxes

Common Accessories

Mounting Accessories

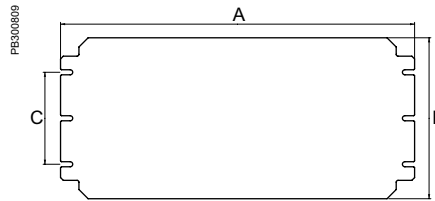
Mounting Plates

- **Material:** galvanized steel.
- **Installation:** mounting by means of 2* or 4 x Ø 5 mm self-tapping screws, Pozidriv head, ref. **NSYAMFSB** (1). Mounting plate installation points compatible with many other brands of accessories.
- **Supply:** 1 unit, supplied without screws.

* Only 2 screws for mounting plates with height of 150 mm.



Dimensions		Mounting plate			Thickness	References
Height (mm)	Width (mm)	Dimensions (mm)				
		A	B	C		
150	150	135	135	-	1.5	NSYMM11SB
	300	135	285	-	1.5	NSYMM13SB
200	200	185	185	100	1.5	NSYMM22SB
	300	185	285	100	1.5	NSYMM23SB
	400	185	385	100	2	NSYMM24SB
300	300	185	185	200	1.5	NSYMM33SB

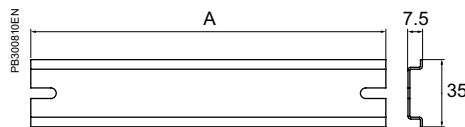


DIN Rails

- **Description:** symmetrical DIN rails, 35 x 7.5 mm.
- **Installation:** mounting by means of 2 x Ø 5 mm self-tapping screws, Pozidriv head, ref. **NSYAMFSB** (1).
- **Supply:** 10 rails, supplied without screws.



Box	DIN rail	
Width (mm)	Length A (mm)	References
150	135	NSYAMRD15357SB
200	185	NSYAMRD20357SB
300	285	NSYAMRD30357SB
400	385	NSYAMRD40357SB



(1) All boxes are delivered with 5 x Ø 5 mm self-tapping screws.

Spacial SBX

Stainless-Steel Industrial Boxes

Common Accessories

PB502104-16



Mounting Accessories

Self-Tapping Screws

- **Description:** self-tapping screws with Pozidriv head for \varnothing 5 mm holes.
- **Supply:** 100 units.

Reference

NSYAMFSB

PB502103-23



Sealing Kit

- **Description:** the sealing kit enable to seal the opening of the box using sealing wire and lead seals.
- **Color:** green.
- **Ingress protection rating:** IP66.
- **Installation:** replaces the standard sealing washer on the box.
- **Supply:** 1 unit.

Reference

NSYPPSB

PB502879-16



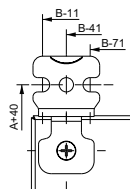
Fixing lugs

- **Description:** fixing lugs to be mounted directly on the rear of the box, either in a horizontal or vertical position. Their versatile design complies with the mounting dimensions of many other enclosures.
- **Installation:**
 - horizontal or vertical position,
 - distance between wall and enclosure: 10 mm,
 - only requires a screw-driver.
- **Maximum load:** 70 kg.
- **Supply:** 4 fixing lugs, screws and pre-mounted sealing gaskets.

Reference

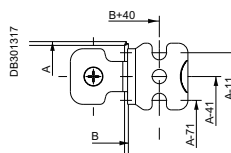
NSYAEFPFSBX

DB301317



Vertical position.

A: Enclosure height
B: Enclosure width



Horizontal position.

Stainless-Steel Industrial Boxes

Common Accessories

Cable Entries Overview



New



New

Characteristics	Simple-5	Synthetic snap-in cable gland	Stainless-Steel cable gland with lamellar insert	
	ISO cable gland.	Without thread. Easy assembly and disassembly. Suitable for walls from 0.5 to 4 mm thick.	Lamellar technology provides excellent resistance to traction as well as excellent torsional protection. For outdoor use, or for aggressive environments.	
Material	PA6 Polyamide, neoprene gasket	PA6 Polyamide, neoprene gasket	AISI 304L or AISI 316L Stainless-Steel, neoprene gasket	
Color	RAL 7035 gray	RAL 7035, RAL 7001, RAL 9005. Other colors on demand	-	
Cable entry material	Combined	Non armored	Non armored	
Installation possibilities	On cable gland plate or directly on enclosure			
Flexibility of the installation	Low			
Reversibility	Medium			
Ingress protection rating	IP68	IP66	IP68	
Cable retention	High	High	High	
Cable diameter (mm)	From 12 to 40	From 16 to 40	From 12 to 40	
Cable installation time	Slow	Slow	Slow	
Quantity of cables to be fitted for a given surface	+	+	+	
Cable entries for cables with connectors	No	No	No	
Thread type	-	Metric EN 60423 Other types are available on demand	Metric EN 60423	
Cut-out dimensions (mm)	Various circular hole diameters according to cable diameter			
External dimensions (mm)	From Ø 15 to 46	From Ø 22 to 46	From Ø 14 to 43	
Certificates	Glow wire resistance: 960°C	UL 94 V-2 (except for the size M40)	UL 94 V-2	
Standard	Compliance with VDE, UL and CSA	DIN EN 62444, UL 514B, UL 514B§8.26.7	DIN EN 62444, UL 514	
Flame resistance	750 °C	-	-	
Temperature range	-	-20°C to + 100°C	-20°C to + 100°C	
References*			AISI 304L	AISI 316L
	ISM71501	NSYCGSP16	NSYCGX12	NSYCGX12H
	ISM71502	NSYCGSP20	NSYCGX16	NSYCGX16H
	ISM71503	NSYCGSP25	NSYCGX20	NSYCGX20H
	ISM71504	NSYCGSP32	NSYCGX25	NSYCGX25H
	ISM71505	NSYCGSP40	NSYCGX32	NSYCGX32H
	ISM71506		NSYCGX40	NSYCGX40H
	IMT36150			

* For details, type the reference in the search engine at se.com/enclosures

Spacial SBX

Stainless-Steel Industrial Boxes

Common Accessories

Earthing Accessories

Earthing Braids

■ **Description:** earthing connection braid for high frequencies. Helps protect against disturbing electric currents that are produced.

■ **Material:** tinned copper.

■ **Supply:** 10 earthing braids (nuts and washers not included).

■ Reference by unit. Order by multiples of 10 (10, 20, 30...).

Length (mm)	Width (mm)	Section (mm ²)	Terminal Ø (mm)	References
150	12	6	6.5	NSYEB156D6
	17	10	6.5	NSYEB1510D6



For NSYEB2050D8.



For all other references.

Earthing Cables

■ **Description:** make it easier to install a good earthing connection, at an optimized length.

■ **Material:** brass and copper alloy terminal, green and yellow PVC insulating sheath.

■ **Supply:** 10 earthing cables (nuts and washers not included).

■ Reference by unit. Order by multiples of 10 (10, 20, 30...).

Length (mm)	Section (mm ²)	Terminal Ø (mm)	References
150	6	6.4	NSYEL136D6
160	6	6.4	NSYEL166D6
220	6	6.4	NSYEL226D6
250	10	6.4	NSYEL2510D6



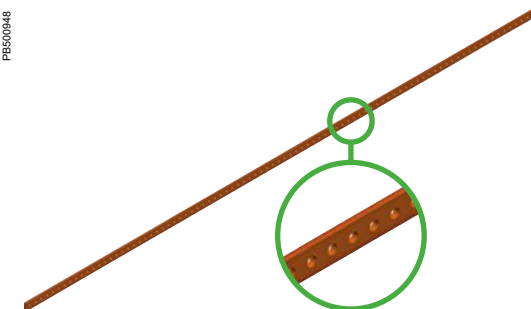
Earthing Strip

■ **Description:** perforated brass bar, 15 x 3 mm. 1 m long. 87 connection points, M5 drill holes.

■ **Supply:** 1 earthing strip and mounting elements.

Reference

NSYECB1M153

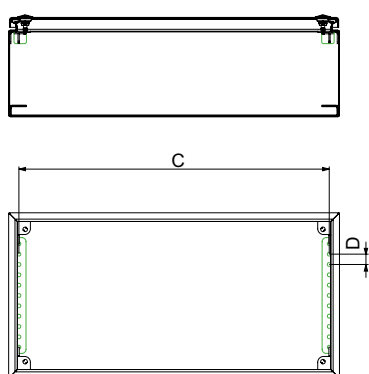


Stainless-Steel Industrial Boxes

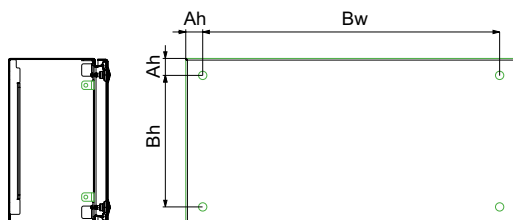
Technical Information

Dimensions			Sheet thickness	Box installation			Mounting	
Height (mm)	Width (mm)	Depth (mm)	(mm)	Ah (mm)	Bh (mm)	Bw (mm)	C (mm)	D (mm)
150	150	80	1.2	20.5	109	109	125	12.5
	300	80	1.2	20.5	109	259	275	12.5
200	200	80	1.2	20.5	159	159	175	12.5
	300	80	1.2	20.5	159	259	275	12.5
	400	120	1.2	20.5	159	359	375	12.5
300	300	120	1.2	20.5	259	259	275	12.5

DE301315 Section A-A



Section B-B





Schneider Electric Industries SAS

35, rue Joseph Monier
CS 30323
92506 Rueil Malmaison Cedex
France

RCS Nanterre 954 503 439
Capital social 928 298 512 €
www.se.com

04-2020
UEMKCAT005EN

© 2020 - Schneider Electric. All Rights Reserved.
All trademarks are owned by Schneider Electric Industries SAS or its affiliated companies.

This document has been
printed on recycled paper.

